

CO₂, Sustainability & the built environment

Richard Coackley

President, ECCE



www.wyg.com

The Renewables Smokescreen

Best Practice

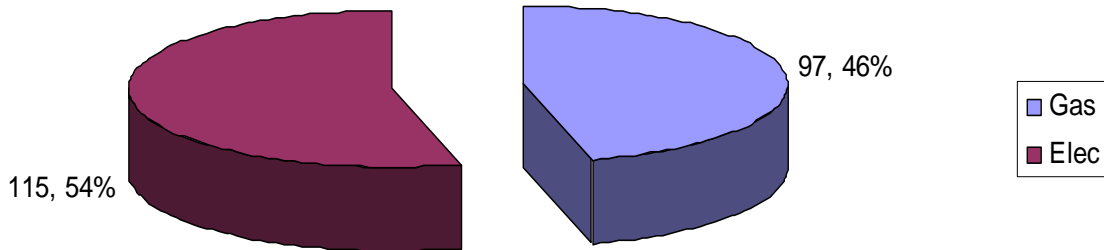
www.wyg.com

Beware the Sustainability Grenade !!!

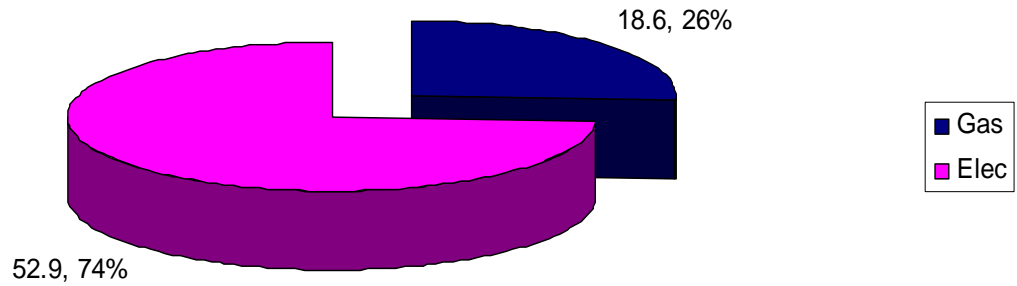


The Renewables Smokescreen

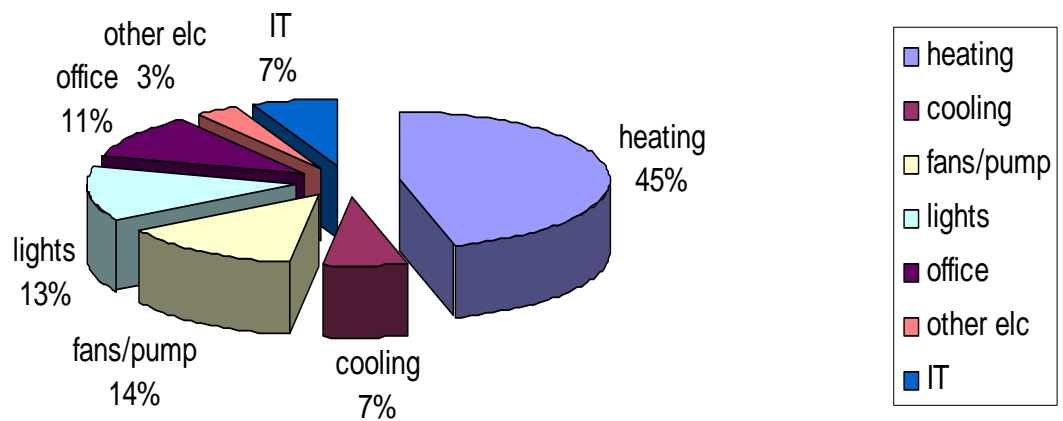
Energy Split ECON 19 AC office, kWh/m2



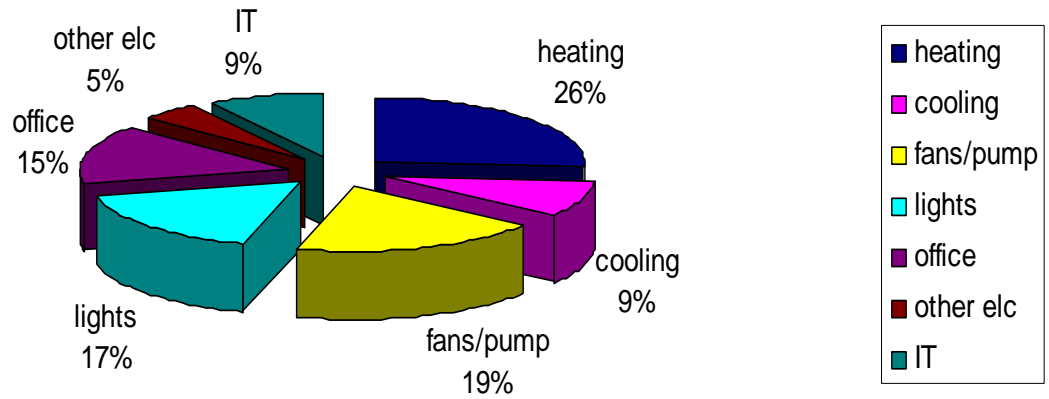
ECON 19 Carbon Dioxide Split



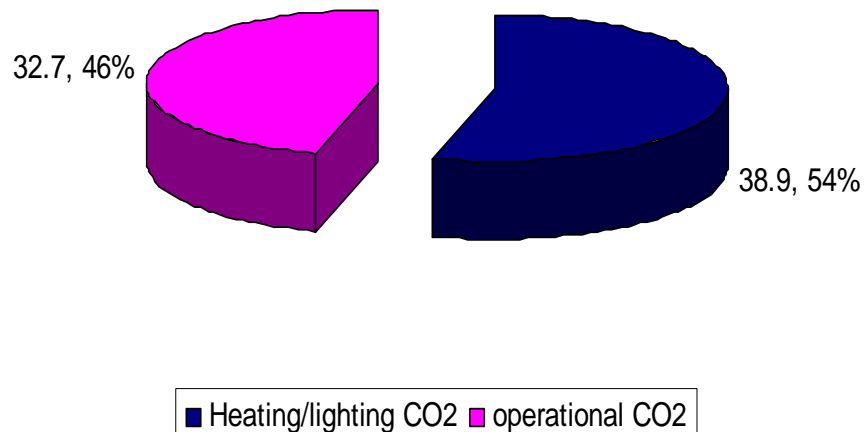
Energy Split, kWh/m2 ECON 19 office



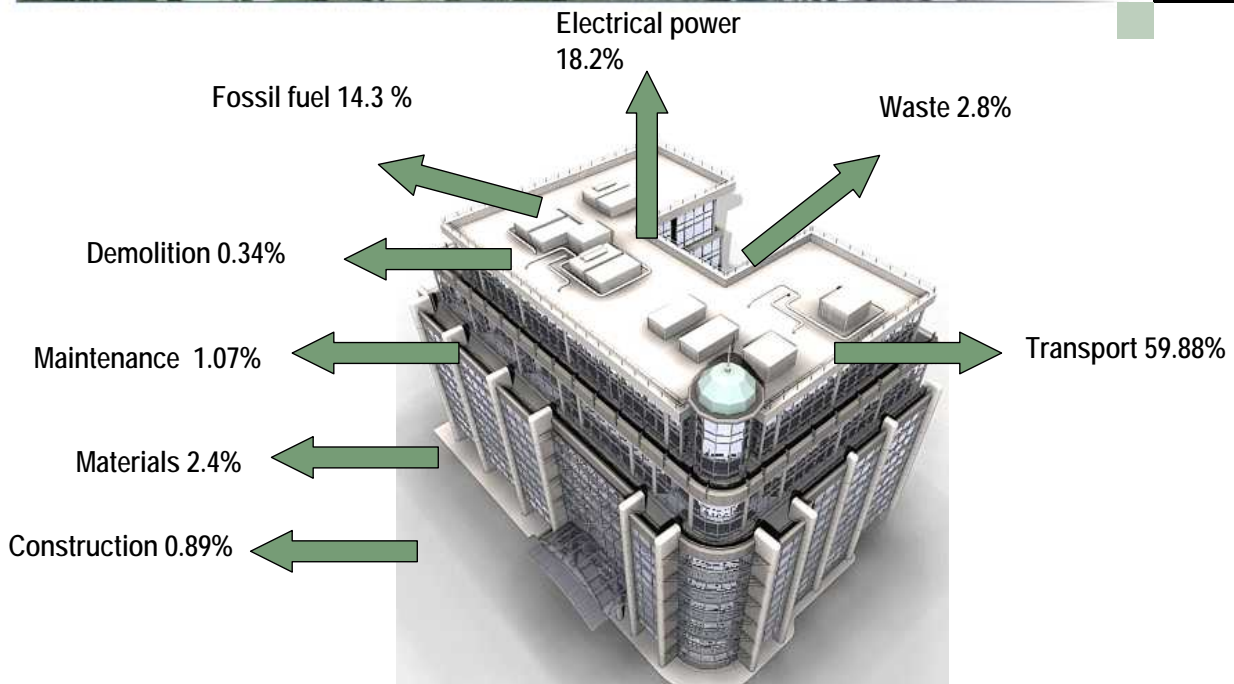
ECON 19 Detail Carbon Dioxide split



Operational vs Environmental CO2 kgCO2/m2



The Renewables Smokescreen



Best Practice



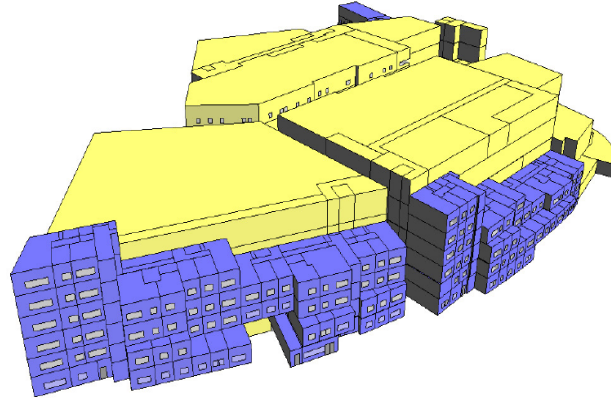
Reduce (Design out use, high efficiency)

Reuse

Recycle

Dispose of thoughtfully

- Early modelling
- Use the technology to:
 - assist in determining optimum compliance
 - Inform fabric design
 - Inform servicing strategy
 - Impact of LZC technology
 - Optimise design
- REAL value engineering
not cost cutting
£1m saved on glazing
- Intelligent designing



- Sustainable:
“development that meets the need of the present without compromising the ability of future generations to meet their own needs”

